

INFERNO

ESTIMATION OF HEARING LOSS RISK

Summary by Lars Kjellström

Royal Institute of Technology, Stockholm
MWL Department of Technical Acoustics

1996

Conclusion

On the behalf of MultiSound Technology the siren system Inferno has been examined with respect to risks of hearing loss. The system generates a very strong and irritating sound in the frequency area around 3 kHz.

Since hearing loss is built up successively, a few exposures to noise are hardly any great danger. If the sound pressure level is very high, more than 130 dB(A), immediate damage might occur. Inferno's sound pressure level has been measured to 125 dB(A) at 1 meters distance. In order to estimate repeated exposures during a longer time, different norms are used. These norms are meant to be used in order to evaluate the risk for noise-induced hearing loss in the workplace, and builds on daily noise exposure during an entire work life. Since burglars' working hours are hard to define these norms are hard to use in the Inferno case. An exception is ISO* 1999:1990 where the assumption of exposure can be more adaptable. If you estimate the noise exposure to 125 dB(A) for 1 minute per day during a years time, the risk for hearing loss is 13%. This risk level is generally the one used when determining the limit for non damaging noise-induced hearing loss. Under the above mentioned exposure assumptions, Inferno is to be looked upon as harmless.

Research shows that a long period of silence between the noise exposures reduces the damage risk. Intermittent and short duration noise, 3-4 minutes, is also preferable. Both these conditions apply to expected exposure to an Inferno.

* International Organization of Standardization

Introduction

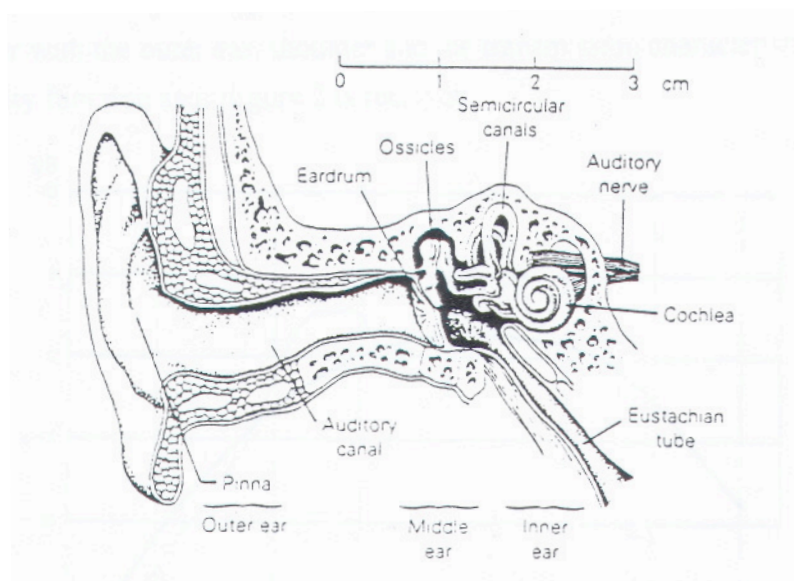
Inferno is a system of sirens intended to be a supplement to an already existing alarm. It produces a very strong and irritating noise in the frequency range around 3kHz. The system consists of four separate signal channels which each generates a square wave. By shifting the four frequencies a most annoying sound is produced, it can be compared to untuned musical instruments.

This summary is aimed to judge if there is a risk for hearing loss. The class of risk is of course thieves, but also contractors and service personnel.

First a short description of the anatomy of the ear and hearing losses is given.

Anatomy and audiology

Anatomy



1. Anatomy of the ear. Source: D. Hall. Musical acoustics.

The ear consists of three different parts : outer-, middle- and inner ear. The outer ear includes the pinna and the auditory canal. The geometry of the pinna settles the sensitivity at different directions and makes it possible to locate sound sources in altitude and forward or backward.

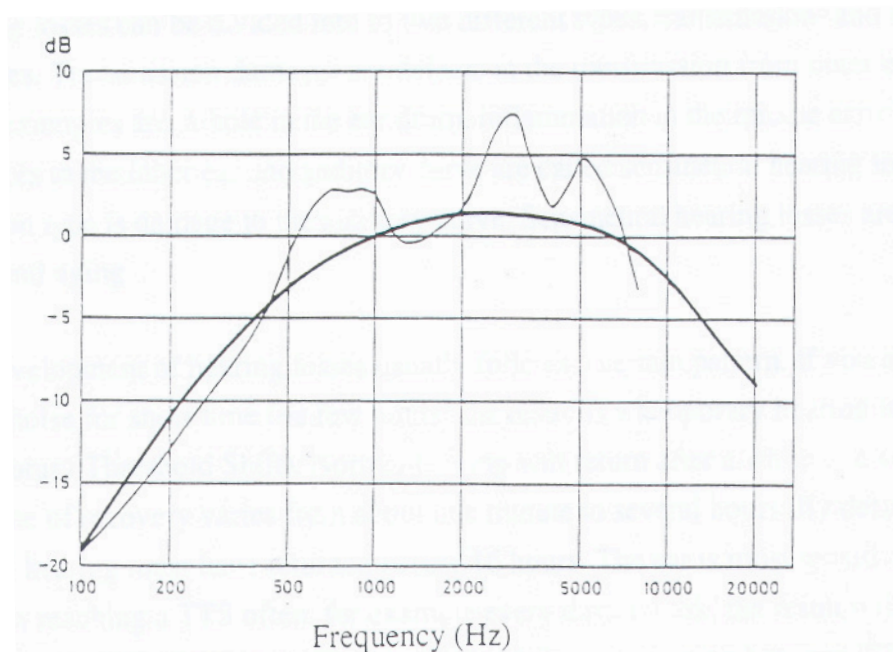
In the middle ear the eardrum and the ossicles work as a transformer between outer- and inner ear. Two small muscles in the middle ear make it possible to limit the motion of the ossicles. This reflex mechanism protects the middle ear from strong noises in the frequency range below 1.5 kHz.

The inner ear, which is filled with liquid, contains the semicircular canals and the cochlea. The cochlea is a coiled canal with a length of about 35 mm. In this canal the basilar membrane is located. When the basilar membrane is put into motion it activates the auditory nerve.

Limits of audibility

A young person with normal hearing is able to hear sound in the frequency range 20-20,000 Hz. Aging affects the sensitivity for mainly high frequencies. At the age of 65 the upper limit is about 12 kHz for

women and 5 kHz for men. The sensitivity of the ear varies strongly with frequency. The length of the auditory canal causes a first resonance frequency at 3 kHz. Together with the outer ear, shoulder and the transmission characteristic of the middle ear a sensitivity function as in figure 2 is received.



2. Thin line: Sensitivity function of the ear. Thick line: A-weighting.
Source: Möller. Människan och bullret.

The figure shows that the ear is most sensitive in the frequency range 500-5,000 Hz. This should be compared to the most important range for identifying speech which is 300- 3,000 Hz.

The difference between the quietest and strongest sound that can be detected is about 130 dB (rel. 20 μ Pa). Both the upper and the lower limits differ much, about ± 10 dB, from one person to another.

Weighting

Since the sensitivity of the ear varies with frequency, equipment for measuring sound pressure level often includes some type of weighting filter. Four different filters occur, A, B, C and D. The most common is the A-filter. A sound pressure level measured with an A-filter is termed with the unit dB(A) or dBA. The weighting function of the A-filter is given in figure 2.

Hearing loss

Hearing loss can be divided into two different types, transmission and sensorineural damage. Transmission damages are defects in the transmission from outer ear to cochlea. Some examples are, a hole in the ear drum, inflammation in the middle ear or bad ossicles. Damage to the inner ear and auditory nerve are called sensorineural hearing loss. The most common type is damage to the auditory nerve. sensorineural hearing loss is mostly caused by noise and aging.

The development of hearing losses usually follows a certain pattern. If you are exposed to heavy noise for short time (a few hours) the result is a temporary hearing loss, T.T.S. (Temporary Threshold Shift). Normal hearing will return after a while in a silent environment. The time of recovery varies from about one minute to several hours. By definition of T.T.S. normal hearing must have returned before 16 hours. The ear is most sensitive to T.T.S. at 4 kHz. If one is reaching a T.T.S. often, for example every day at work, the result will be lasting hearing loss, P.T.S. (Permanent Threshold Shift). The connection between T.T.S. and P.T.S. is still the subject of research. Due to ethic reasons it is also difficult to do experiments to confirm this connection.

An important type of noise is impulse noise, which is characterized by very high sound pressure level and short duration (<1 second). Examples of sound sources giving impulse noise are gunfire and hammer blows. Due to the short duration the brain will not be able to detect the real level of the noise. The ear itself is however fast enough to be affected. This means that impulse noise is more harmful than we believe. A special type of impulse noise damage is the acoustic trauma which is caused by one single very strong noise and gives an instant damage.

Estimation of hearing loss damage risk

General information about regulations

Most of the existing regulations concern occupational noise. Hearing loss risk criteria is estimated from extensive audiologic research of workers in noisy environments. To exclude natural reasons for hearing loss such as aging, the examined group is compared to a group of people who have not been exposed to occupational noise. Common for all regulations is to try to estimate a sound pressure level that under certain assumptions is harmless. The assumptions made are about exposure time per day and the number of years of exposure. These parameters are usually set to 8 hours a day and 40 years, which is supposed to be a whole working life. While the sensitivity of the ear differs from one person to another, the question is how large a portion of a population should be taken care of. The spontaneous answer is of course that the whole population should be saved. Since some people are extremely sensitive, such demands would result in unrealistic exposure limits. In table 3 some different organizations risk estimates are given. As a definition of hearing loss an average P.T.S. of 25 dB at the frequencies 500, 1,000 and 2,000 Hz are used. For example ISO thinks that 10 % of a population will have a P.T.S after 40 years of daily exposure to 85 dB(A).

Organization	Level (db(A) (8h, 40 years)	Risk (%)
ISO	90	21
	85	10
	80	0
EPA	90	22
	85	12
	80	5
NIOSH	90	29
	85	15
	80	3

3. Risk for permanent hearing loss at different levels (Threshold shift of 25 dB at 0.5 / 1 / 2 kHz).

Source: Axelsson et al. Scientific basis of noise induced hearing loss.

To judge exposure to durations other than 8 hours, a term called “equivalent sound pressure” level is used. The assumption made is that the amount of hearing loss depends on the total noise energy received. In other words, a strong sound with short duration have the same effect as a weak sound with long duration. For example, if the exposure time is halved, the sound power can be doubled, which

corresponds to an level increase of 3 dB. The increase of level permitted when exposure time is halved, is called converting index or Q-factor.

A summary of some countries limits (equivalent sound pressure level) and Q-factor is presented in table 4. Most countries have chosen the limit value 85 dB(A) and Q-factor 3 dB. One exception is the United States of America which has a limit value of 90 dB(A) and Q-factor of 5 dB(A). This difference gives some peculiar results. An American ear stands 100 dB(A) for 2 hours while a Swedish ear stands that level for 15 minutes. This example only tells us that the knowledge about the ear's sensitivity is limited. Most scientists think that the values 85 dB(A) and 3 dB are more correct.

The knowledge about risks concerning impulse noise is yet limited. Many countries think that a limit value of 140 dB is reasonable.

4.Limit values and Q-factors in different countries.

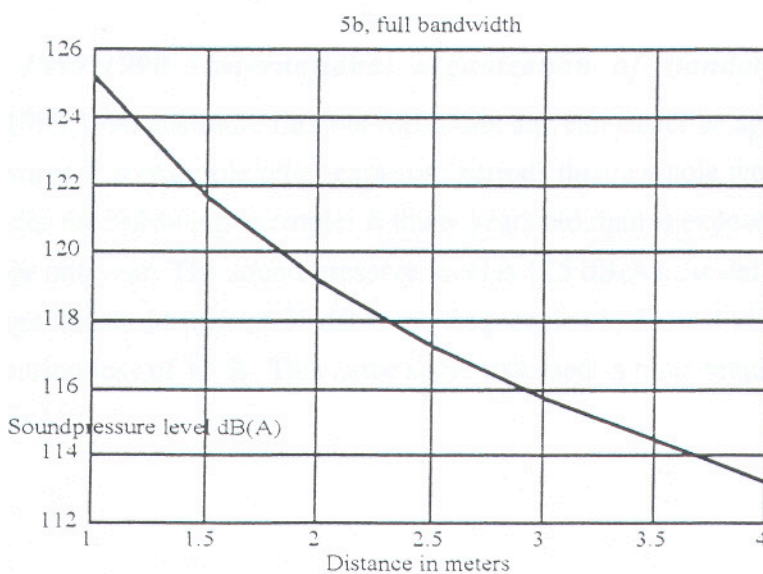
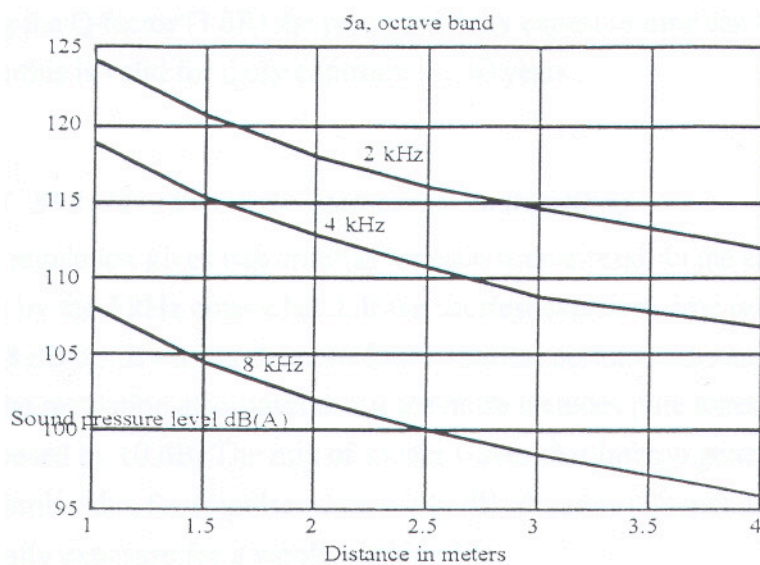
Source: Axelsson et al. Scientific basis of noise induced hearing loss.

Country	Limit	Q-factor
Australia	85	3
Brazil	85	5
Canada	87	3
Finland	85	3
France	85	3
India	90	-
Israel	85	5
Italy	85	3
Japan	90	-
Netherlands	80	3
New Zealand	85	3
Norway	85	3
Spain	85	3
Sweden	85	3
United Kingdom	85	3
United States	90	5

Regulations applied to Inferno

Following, three different regulations will be applied, AFS 1992:10, SEN 590111 and ISO 1999:1990. One problem is that most regulations are supposed to be applied to occupational noise with long time exposures. What working hours does a thief have? Can regulations be applied to very short exposure time? Probably they don't give a perfect answer, but can be used to give a rough estimate.

The diagrams below show the actual sound pressure levels, both for octave bands and full band width (630-16,000 Hz). Measurements have been done for the distances 1 and 2.7 m. The other levels have been calculated with the assumption of direct sound field. This will be correct at the actual frequencies and if the absorption of the walls are relatively high. In rooms with acoustically stiff surfaces such as metal and glass, the dependence of distance may not be so distinct. The calculations also assume that the distances to all loudspeakers is the same. If the distance to one of the loudspeakers is much shorter than the others, this one will dominate. In that case the levels in the diagrams can be decreased by 2-3 dB.



5.a. b Sound pressure level as function of distance.

AFS 1992:10 (National Swedish board of Occupational Safety and Health)

In this regulation the maximum level, independent of exposure time, is set to 115 dB(A). To not exceed this value the distance to the loudspeakers must be at least 3 m (see diagram 5b). By using the Q-factor (3 dB) the permitted daily exposure time can be calculated to 0.5 minutes. Then this is valid for daily exposure for 40 years.

SEN 590111 (Swedish Standards Institution)

This regulation gives risk criteria for each octave band. In the case of Inferno the limit will be fixed by the 2 kHz octave band. If the shortest exposure time is chosen (5 min.), the limit value is 118 dB(A). By using diagram 5a the shortest permitted distance to the loudspeakers will be 2 m. The regulation also states that if the noise includes pure tones, the limit value should be decreased by 10 dB. The mix of square waves that Inferno generates does not give pure tones. The limit value for impulse noise is 140 dB (duration < 20 ms). Like AFS, SEN 590111 is valid for daily exposure for a whole working life.

ISO 1999:1990 (International Organization of Standardization)

ISO 1999: 1990 is a more flexible regulation and can easier be applied to different types of noise exposures. For example, other exposure periods than a whole working life can be used. Let us consider the following example: A thirty year old man is exposed to Inferno one minute every day for one year. The sound pressure level is 125 dB(A). As definition of hearing loss an average threshold shift of 25 dB at the frequencies 1, 2 and 4 kHz is used. This results in a risk for hearing loss of 13 %. This is the same risk used in most regulations to state the limit value 85 dB(A).

Discussion and conclusion

The three regulations above give quite different results. Since it is not likely that thieves are exposed to an Inferno every day for a whole working life, AFS 1992:10 and SEN 590111 overestimates the risk of hearing loss. ISO 1999:1990 can better describe the exposure conditions of Inferno and is therefore more reliable. Since hearing loss is gradually developed, single exposures are not dangerous as long as they do not exceed the level for acoustic trauma (instant damage). A reasonable value for this limit could be the limit value for impulse noise given in most regulations, 140 dB(C) peak. There are qualities and conditions that are not taken care of in regulations. For example, long resting time between exposures (>16 h) decreases the risk of hearing loss. This would be the case for a thief who commits infrequent burglaries. Intermittent and short duration noise is also favorable. Some scientists also think that pure tones are more irritating but not more harmful than noise.

References

1. G. Liden, Audiologi, Almqvist & Wiksell 1985
2. K.D. Kryter, The effects of noise on man, Academic press 1970
3. W. Bums, Hearing and noise in industry, London 1970
4. H.P. Wallin et al, Ljud- och vibrationslära, KTH, MWL 1996
5. D. Hall, Musical acoustics, Brooks/Cole 1990
6. J. Liljencrantz, Elektroakustik, KTH 1993
7. Möller, Människan och bullret, Studentlitteratur 1978
8. D. Henderson et al, Effects of noise on hearing, Raven press 1976
9. Ward, The role of intermittence in PTS, JASA nr. 90(1) 1993
10. R. Lataye P. Campo, Applicability of the Leq as a damage risk criteria, an animal experiment, JASA 01'.99(3)1996
11. W. Clark, Recent studies of TTS and PTS in animals, JASA nr.90(1) 1991
12. J. Patterson, Effects of pressure and energy impulses, JASA nr. 90(1) 1991
13. W. McInick, Human TTS and damage risk, JASA nr. 90(1) 1991
14. K. Karlsson, Hörselskadan i arbetsskadeförsäkringen, Arbete och hälsa 1995: 16
15. Axelsson et al, Scientific basis of noise induced hearing loss, Thieme 1996
16. Arbetarskyddstyrelsens författningssamling AFS 1992:10
17. Svensk standard, SEN 590111:1972
18. SIS, ISO 1999:1990